

# WELCOME TO Abita Springs

**YOU ARE HERE:**

**22500 MAIN STREET, ABITA SPRINGS, LA 70420**

## **NEAREST HOSPITAL(S):**

**St. Tammany Parish Hospital**  
1202 S. Tyler St. Covington, LA 70433  
(985) 898-4000

**Covington Trace ER & Hospital**  
4107 Hwy. 59, Mandeville, LA 70471  
(985) 951-3650

## **EMERGENCY NUMBER IS 911**

**Non-emergency** police telephone number is **(985) 893-3100**

## **TRASH AND RECYCLING**

Recycling Pick-Up is Monday morning, please put recycling cans out Sunday night  
Garbage Pick-Up is Tuesday morning, please put garbage cans out Monday night.

## **EMERGENCY CONTACTS**

Jane Doe, (985) 892-0711 and Mark Doe (985) 892-0712

## **UTILITY INFORMATION**

**This house has Natural Gas.** Please read the Gas notice below/in the binder.

***Notice: Please be a good neighbor by not making excessive noise or engaging in boisterous behavior, especially after 10:00pm. Such behavior can deprive your neighbors of the peaceful enjoyment of their homes.***

Sample

# WHAT TO DO IF YOU SMELL NATURAL GAS

IMMEDIATE RESPONSE TO GAS LEAKS IS ESSENTIAL TO ENSURE THAT PUBLIC SAFETY IS MAINTAINED.

DO NOT DELAY. DO NOT IGNORE GAS ODORS. USING THE GUIDELINES BELOW CAN HELP YOU DEAL WITH ANY POTENTIAL GAS LEAKS. CALL THE GAS COMPANY (985) 892-0711 OR 911 FOR HELP.

## WHO TO CALL IN AN EMERGENCY

### CALL THE GAS COMPANY (985) 892-0711 OR 911 FOR HELP

**Natural gas has no odor. Gas companies add a harmless chemical called mercaptan to give it its distinctive “rotten egg” smell. All natural gas and propane pipeline gas in Louisiana is odorized.**

## IF YOU SMELL GAS INSIDE:

- Go to a phone that is not near the smell and call the local gas company right away. (If the smell is strong or you are unsure, leave the house and then call.) They will come and make the area safe at no charge to you.
- Keep everyone away from the area of the odor.
- Don't smoke or strike any matches.
- Don't light any candles.
- Don't flip light switches on or off.
- Don't use a telephone.
- Don't use any electrical equipment or lights that might create a spark in the area of the odor.
- Don't use the doorbell.
- Don't adjust thermostats or appliance controls.
- Put out all open flames.
- If the odor is strong, leave the premises immediately and tell others to leave. Then, call your local gas company from a neighbor's home.

## **OUTSIDE GAS ODORS SHOULD BE REPORTED RIGHT AWAY - DO NOT TRY TO LOCATE THE SOURCE YOURSELF, IF YOU SMELL OR HEAR ESCAPING GAS:**

- Telephone your local gas company immediately from a neighbor's phone.
- Don't go back inside your home until your local gas company says it is safe.
- Keep others away from the area.

**The Town of Abita Springs provides 24-hour emergency service every day of the year to provide immediate response to emergencies such as natural gas leaks.**

**There is no charge to stop gas leaks. (985) 892-0711**

**(AFTER HOURS EMERGENCY SERVICE COMPANY WILL ANSWER)**

All repairs to gas lines on your premises must be made in accordance with local regulations, by a licensed plumber where required or by your local gas company.

# DETECTING A NATURAL GAS LEAK USING YOUR SENSES

## (985) 892-0711

### SMELL

NATURAL GAS DOESN'T HAVE AN ODOR, SO YOU CAN'T RELY ON YOUR SENSE OF SMELL ALONE TO DETECT IT.

The Town of Abita Springs Gas Department has taken steps to protect customers from natural gas leaks by adding an **odorant**, called **mercaptan**, that smells like **rotting eggs or an unpleasant skunk smell**.



### SIGHT

Natural gas may blow dirt, make bubbles, kill vegetation or create an area of frost on the ground in warm weather when it leaks from an underground pipe.



### SOUND

A natural gas leak can be a quiet hiss or a loud roar.



### 3 STEPS TO TAKE IF YOU SUSPECT A GAS LEAK

- Do not attempt to locate the leak. Leave the area immediately and do not touch anything that could cause a spark.
- Call the Town of Abita Springs (985) 892-0711 and 911 from another location at a safe distance.
- The Town of Abita Springs Gas Department will investigate the situation at no cost. Do not re-enter the area until you have been advised that it is safe.

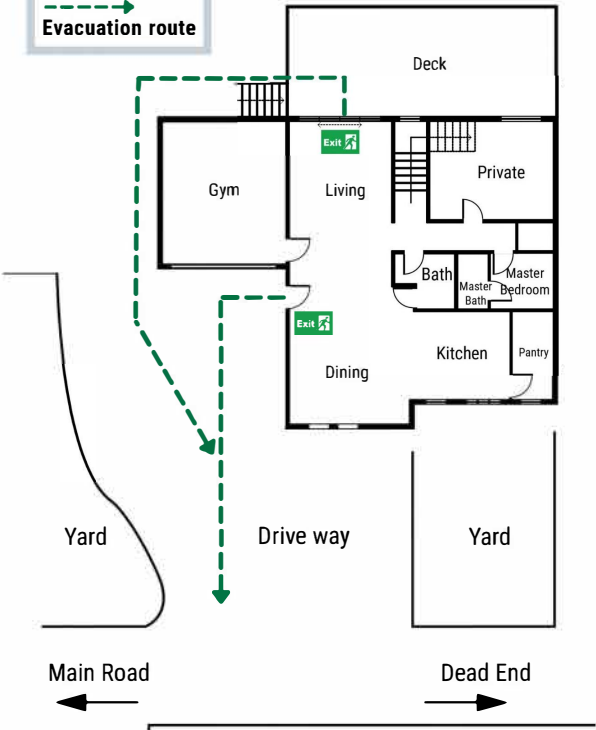
### HEALTH

Symptoms of a natural gas leak include headache, dizziness, loss of coordination, irritation, drowsiness, or unconsciousness. Extremely high concentrations of natural gas can cause suffocation from a lack of oxygen.

# Custom Emergency Floor Plan

KEY:  
Evacuation route

## GROUND FLOOR



Your location is:  
Address here

## -1 FLOOR

